



Chain Valley Colliery Monthly Website Report – April 2026

Site:	Chain Valley Colliery
Department:	Health Safety and Environment
Report Title:	Monthly Environmental Website Report – April 2026
Report Date:	5 th May 2026
Distribution:	Delta Coal Website

Table of Contents

Summary	3
Introduction	3
Scope.....	4
Definitions	4
References	5
Monitoring Results.....	5
Water – Quality	5
Water – Volume.....	6
Water – Groundwater Discharge.....	7
Air Quality - Depositional Dust	7
Air Quality – PM ₁₀	9
Air Quality – PM _{2.5}	11
Weather Data	12

Monthly Website Report

CVC Monthly Environmental Report – April 2025

Summary

Environmental monitoring results are presented in this report for monitoring undertaken during the period of April 2026.

Introduction

Great Southern Energy Pty Ltd (trading as Delta Coal) operates the Chain Valley Colliery, an underground coal mine at the southern end of Lake Macquarie.

Chain Valley Colliery operates under the following regulatory instruments:

- Section 66(6) of the *Protection of the Environmental Operations Act 1997*, to make monitoring data related to an Environment Protection Licence (EPL) publicly available;
- Development Consent SSD-5465 (as modified), issued under the *Environmental Planning and Assessment Act 1979* to provide details of monitoring results and environmental performance;
- An Environment Protection Licence (EPL 1770) issued under the *Protection of the Environment Operations Act 1997*; and
- A Water Access Licence (WAL41508), Aquifer (Sydney Basin – North Coast Groundwater Source) for 4,443 unit shares (megalitres).

The above development consent and licences require various monitoring and reporting requirements to be undertaken by Delta Coal for Chain Valley Colliery.

This report provides environmental monitoring data from Chain Valley Colliery for the month of April 2026.

Details of the Chain Valley Colliery EPL 1770 are provided below.

Chain Valley Colliery Information	
Premises name	Chain Valley Colliery
Address	Construction Road, Chain Valley Bay, NSW, 2259
Licensee	Great Southern Energy Pty Ltd
EPL #	1770
EPL location	EPL 1770 – April 2025

The overall purpose of this monthly report is to keep stakeholders informed of the environmental monitoring results at Chain Valley Colliery and maintain a transparent and accountable reporting system.

Scope

This report presents the results from the various environmental monitoring programs undertaken for Chain Valley Colliery. Results are presented monthly with annual data and averages.

Where applicable, the results of the monitoring programs are compared with the relevant criteria (from the EPL or Development Consent) to assess compliance. Monitoring results presented in this report include:

- Water – quality;
- Water – volume;
- Air Quality – Depositional Dust
- Air Quality – PM₁₀
- Air Quality – PM_{2.5}; and
- Meteorological data.

Definitions

g/m²/month – grams per square metre per month;

kL – kilolitre;

ML – megalitre;

mg/L – milligrams per litre;

TSS – total suspended solids;

µg/L – micrograms per litre; and

µS/cm – microSiemens per centimetre.

Monthly Website Report

CVC Monthly Environmental Report – April 2025

References

ALS Group - Monthly Water Monitoring Results **April 2026**

ALS Group - Dust Deposition Report **April 2026**

Development Consent SSD-5465 (as modified)

Environment Protection Licence (EPL) 1770 (Licence version date: 9 April 2025)

Monitoring Results

Water – Quality

Water quality results for monthly surface water and Spillway event sampling at Chain Valley Colliery, Licensed Discharge Points (LDP1 and LDP27) are presented below.

LDP1 April 2026			
EPL	1770		
Licensee	Great Southern Energy Pty Ltd		
Premises	Chain Valley Colliery		
Date Sampled	23-04-2026		
Date Obtained	1-05-2026		
Sampling Point	LDP 1		
Parameter	Units	Limit	Result
Biochem. Oxygen Demand	mg/L	-	4
pH	pH	6.5-8.5	7.68
Total Sus. Solids (TSS)	mg/L	50	16
Electrical Conductivity	µS/cm	-	30600
Oil & Grease	mg/L	10	<5

LDP27 April 2026			
EPL	1770		
Licensee	Great Southern Energy Pty Ltd		
Premises	Chain Valley Colliery		
Date Sampled	*		
Date Obtained	*		
Sampling Point	LDP 27		
Parameter	Units	Limit	Result
pH	pH	6.5-8.5	
Total Sus. Solids (TSS)	mg/L	50	
Electrical Conductivity	µS/cm	-	
Oil & Grease	mg/L	10	

*Note no discharge from LDP27 during the monitoring period.

Monthly Website Report

CVC Monthly Environmental Report – April 2025

Water – Volume

Monthly water volumes discharged from the site are summarised below. There was no exceedance of volumetric discharge recorded at CVC for the monitoring period.

EPL	1770
Licensee	Great Southern Energy Pty Ltd
Premises	Chain Valley Colliery
Date Sampled	Daily
Date Reported	Refer report date
Discharge volume limit	12,161 kilolitres per day
Sampling Point	1 and 27

Date (24 hour period)	LDP 1 Volume (kL)	LDP 27 Volume (kL)	Total Discharged	Rainfall (mm)
1/04/2026	5828	0	5828	0
2/04/2026	5828	0	5828	0
3/04/2026	5594	0	5594	0
4/04/2026	5797	0	5797	21.6
5/04/2026	6769	0	6769	1.6
6/04/2026	6307	0	6307	0
7/04/2026	4543	0	4543	0
8/04/2026	1683	0	1683	0
9/04/2026	2008	0	2008	0
10/04/2026	1878	0	1878	0
11/04/2026	6299	0	6299	0
12/04/2026	9946	0	9946	0
13/04/2026	5261	0	5261	0
14/04/2026	5769	0	5769	0
15/04/2026	3309	0	3309	0
16/04/2026	6148	0	6148	0
17/04/2026	9938	0	9938	0
18/04/2026	3023	0	3023	0
19/04/2026	1968	0	1968	0
20/04/2026	5089	0	5089	0
21/04/2026	5705	0	5705	0.2
22/04/2026	7021	0	7021	0.4
23/04/2026	6695	0	6695	0
24/04/2026	5879	0	5879	2
25/04/2026	5915	0	5915	0.8
26/04/2026	5895	0	5895	0
27/04/2026	5936	0	5936	0
28/04/2026	5955	0	5955	0
29/04/2026	5950	0	5950	0.2
30/04/2026	4696	0	4696	6.2

Average	5421	0	5421	1
Minimum	1683	0	1683	0
Maximum	9946	0	9946	22

Monthly Website Report

CVC Monthly Environmental Report – April 2025

Water – Groundwater Discharge

Groundwater discharged from underground workings to the CVC sedimentation ponds within the surface operational area has been detailed below. Chain Valley Colliery operates Water Access License (WAL 41508) permitting the extraction of 4,443 megalitres per water year (financial year calendar) with a roll-over entitlement up to a maximum of 8,886 megalitres.

CVC Groundwater to Surface Totals FY2025-2026		
Date (month)	GW Discharge (ML/Month)	GW Discharge (Cumulative ML YTD)
July 2025	215	215
August 2025	203	417
September 2025	223	640
October 2025	247	887
November 2025	240	1127
December 2025	241	1368
January 2026	216	1584
February 2026	215	1799
March 2026	217	2016
April 2026	178	2194

Air Quality - Depositional Dust

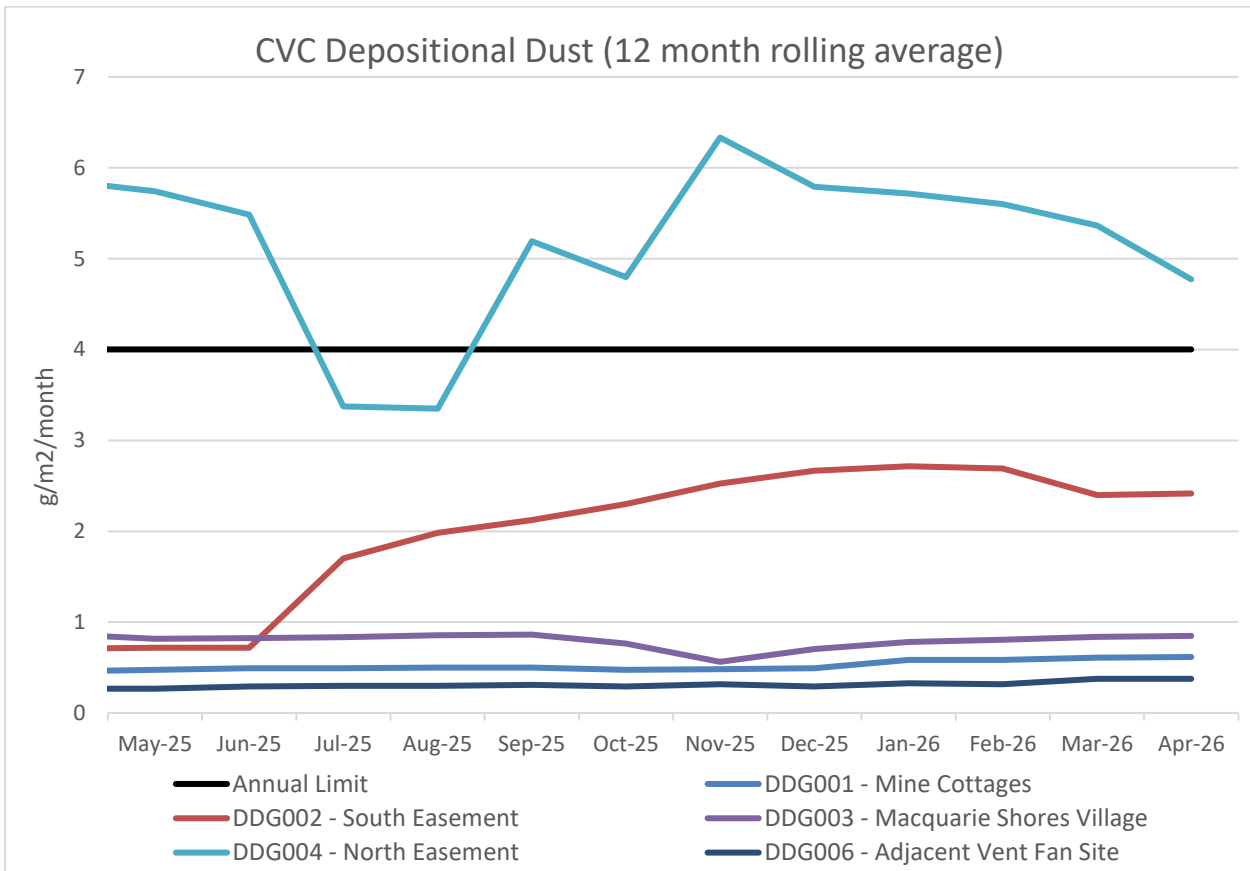
Monthly depositional dust results are shown below. Dust deposition gauges were sampled and analysed in accordance with Development Consent SSD-5465 (as modified), Delta Coal Air Quality and Greenhouse Gas Management Plan, and relevant Australian Standards.

April 2026	
EPL	1770
Limit	4g/m ² /month / Annum 2g/m ² /month increase from previous result
Sampling Date	5/03/2026 – 2/05/2026
Site	Insoluble Matter (g/m²/month)
DDG001	0.6
DDG002	0.4
DDG003	0.3
DDG004	0.3
DDG006	0.1
Notes: For site locations refer to the Delta Coal Air Quality and Greenhouse Gas Management Plan.	

The 12 month rolling average results for DDG001, DDG002, DDG003 and DDG006 remain within the depositional dust limit of 4g/m²/month (annual average). The 12 month rolling average result for DDG004 was 4.77g/m²/month against the limit of 4g/m²/month.

Monthly Website Report

CVC Monthly Environmental Report – April 2025



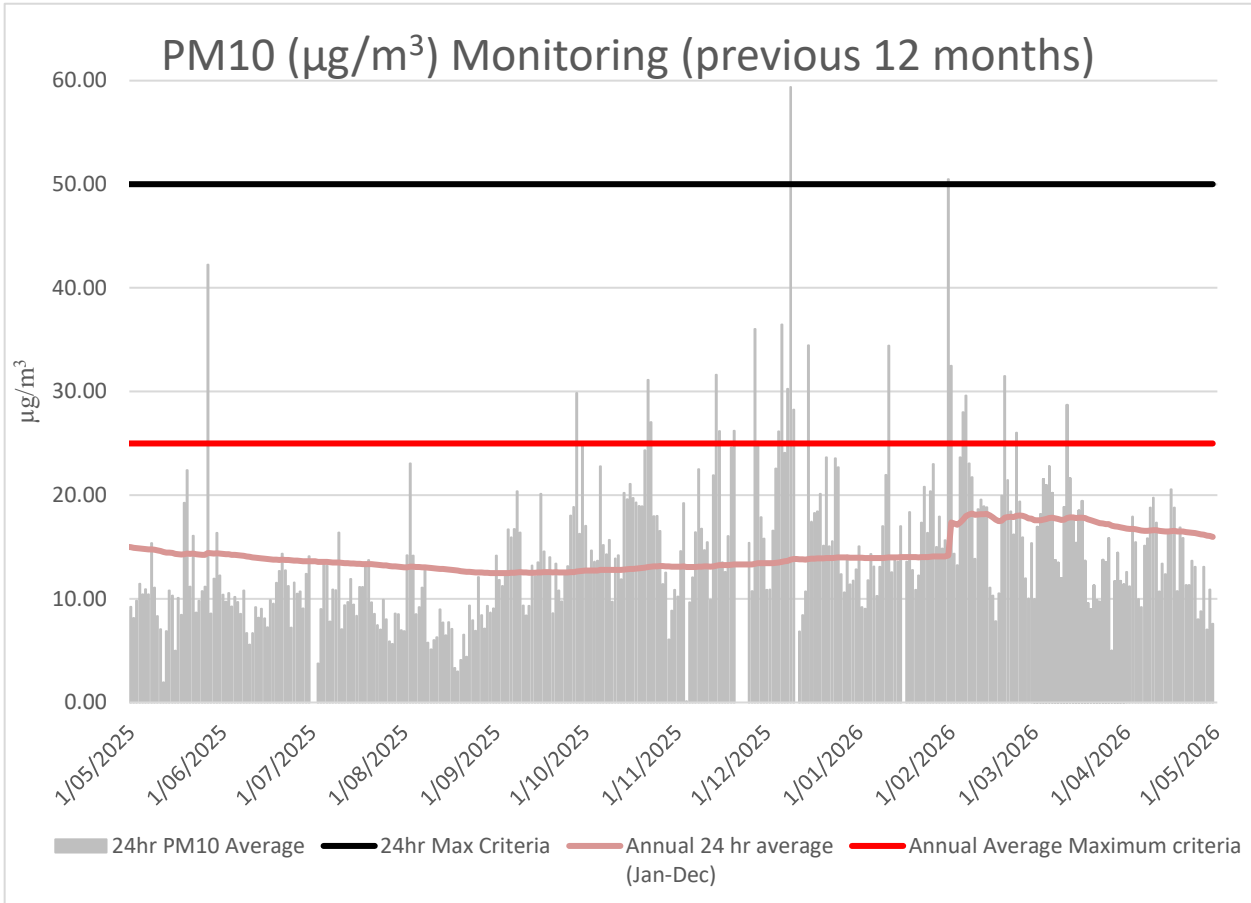
A 12-month rolling average of depositional dust concentrations has been presented above. Dust Gauges DDG001, DDG002, DDG003 and DDG004 are located within a closer proximity to Chain Valley Colliery and DDG006 is positioned in a location representative of the Chain Valley Colliery ventilation fan site at Summerland Point.

Monthly Website Report

CVC Monthly Environmental Report – April 2025

Air Quality – PM₁₀

The 24hr PM₁₀ average from Delta Coal’s Tapered Element Oscillating Microbalance (TEOM), located at the Mannering Park Sewage Treatment Plant, is presented below for the previous 12 months.



Annual 24hr PM₁₀ average maximum criteria for April 2026 was below the annual average maximum criteria limit. A summary of data availability for Delta Coal’s TEOM is presented below for the reporting period. Delta Coals TEOM had a data availability of 98.4% for the month of April 2026.

Monthly Website Report

CVC Monthly Environmental Report – April 2025

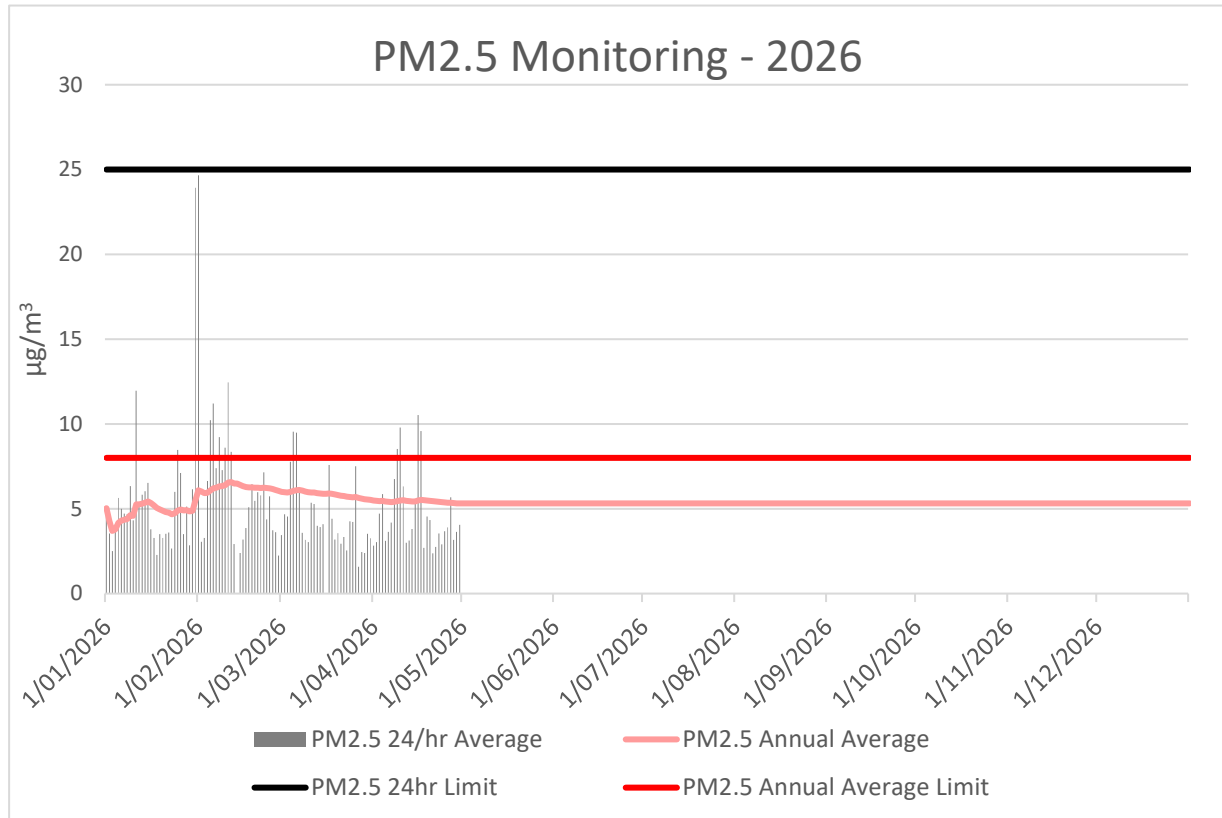
Variable	April	Total	Valid
A/C Temp	100%	8640	8637
A1_Scaled	100%	8640	8637
Band	100%	8640	8637
Bypass Flow	100%	8640	8636
Cap Temp	100%	8640	8637
Case Temp	100%	8640	8636
Config	100%	8640	8637
Dew Point	100%	8640	8637
Dig-In	100%	8640	8637
Dig-Latch	100%	8640	8637
ESN	100%	8640	8637
Filter Freq	100%	8640	8637
Filter Load	100%	8640	8637
Humidity	100%	8640	8637
MC	100%	8640	8637
MC 12Hr	100%	8640	8637
MC 1Hr	100%	8640	8637
MC 24Hr	100%	8640	8637
MC 30min	100%	8640	8637
MC 8Hr	100%	8640	8637
MC Total	100%	8640	8637
Mobile Signal	100%	8640	8637
Noise	100%	8640	8637
PM10 Flow	100%	8640	8636
Pressure	100%	8640	8637
Site	0.0%	8640	0
Temperature	100%	8640	8637
Tube Temp	100%	8640	8636
Vac Pressure	100%	8640	8637
Volts	100%	8640	8637

Monthly Website Report

CVC Monthly Environmental Report – April 2025

Air Quality – PM2.5

Delta Coal utilises PM_{2.5} data obtained from Delta Electricity owned and operated beta attenuation monitor (BAM). The PM_{2.5} monitor is located on Tingley Road, Wyee.



There were no exceedances of the PM_{2.5} daily average limit in April 2026. The 12-month rolling average PM_{2.5} value on 30 April was 5.3 $\mu\text{g}/\text{m}^3$. PM_{2.5} data availability in April was 100%. The 2026 year to date PM_{2.5} data availability is 96.77%.

Monthly Website Report

CVC Monthly Environmental Report – April 2025

Weather Data

A summary of weather data recorded by a meteorological monitoring station at the adjacent Mannering Colliery is presented below for the year to date. (EPA ID no. 26).

Monthly Weather Data 2026			
Licensee	Great Southern Energy Pty Ltd		
Location	Mannering Colliery Meteorological station		
Date published	Refer report date		
Date sampled	Daily		
Date obtained	5 May 2026		
Month	Total Rainfall/Month (mm)	Min Temp	Max Temp
Jan-26	224	14.9	40.4
Feb-26	114	14.2	37.4
Mar-26	103	12.6	31.9
Apr-26	33	6.8	30.3

Monthly Website Report

CVC Monthly Environmental Report – April 2025

Variable	April	Total	Valid
Baro (Corrected)	100%	2880	2880
10m Temp	100%	2880	2880
2m Temp	100%	2880	2880
A1_Scaled	100%	2880	2880
Assumed Temp	100%	2880	2880
Band	100%	2880	2880
Barometric	100%	2880	2880
Config	100%	2880	2880
Daily Evap	100%	2880	2880
Daily Rain	100%	2880	2880
Delta T	100%	2880	2880
Dew Point	100%	2880	2880
Dig-In	100%	2880	2880
Dig-Latch	100%	2880	2880
ESN	100%	2880	2880
FDI	100%	2880	2880
Heat Index	100%	2880	2880
Humidity	100%	2880	2880
Mobile Signal	100%	2880	2880
Rain	100%	2880	2880
Raw Evap	100%	2880	2880
S Class	100%	2880	2880
Scalar WS	100%	2880	2880
Sigma	100%	2880	2880
Site	0.0%	2880	0
Solar Radiation	100%	2880	2880
Vector WD	100%	2880	2880
Vector WS	100%	2880	2880
Volts	100%	2880	2880
Wind Chill	100%	2880	2880
Wind Direction	100%	2880	2880
Wind Speed	100%	2880	2880
WS Avg	100%	2880	2880
WS Gust	100%	2880	2880